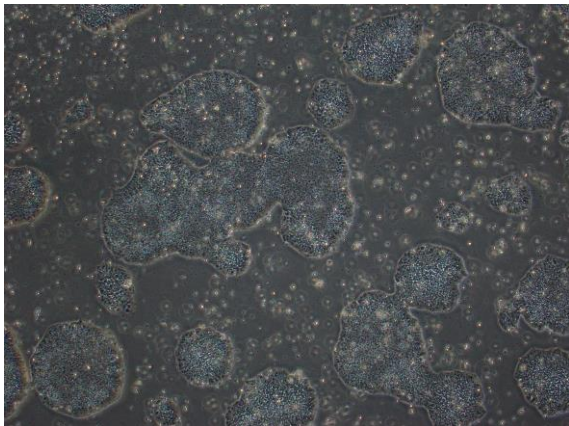
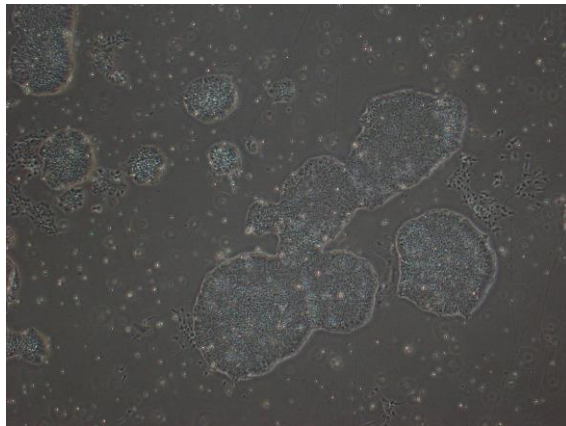


【 CiRA-j-1507 】 Morphology of iPSC colonies

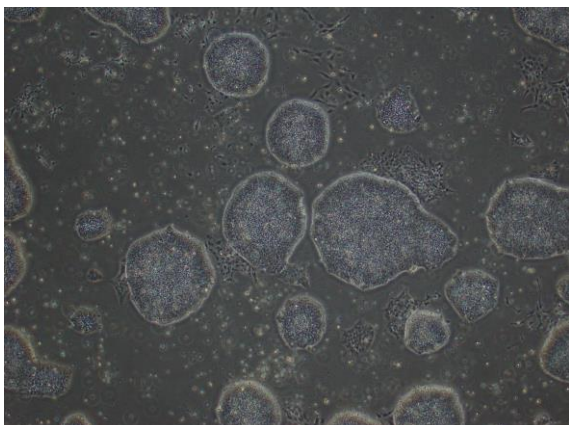
CiRA-j-1507-A: passage-3



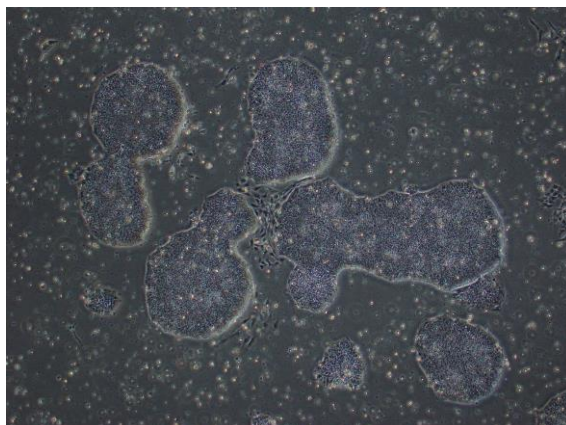
CiRA-j-1507-B: passage-3



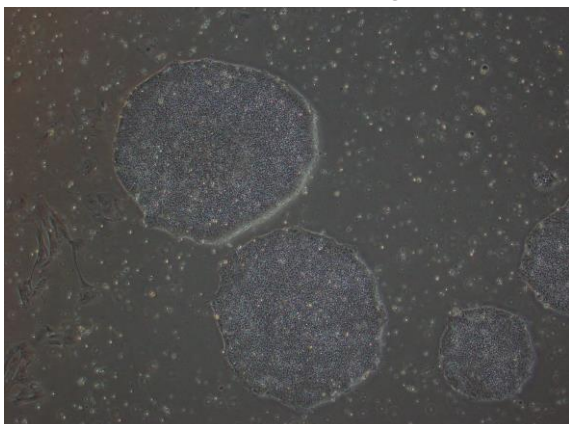
CiRA-j-1507-C: passage-5



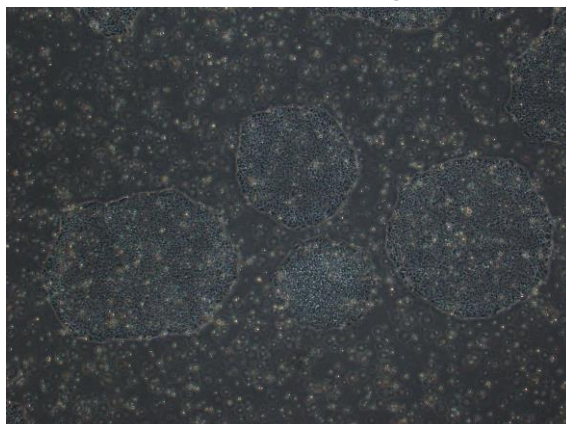
CiRA-j-1507-D: passage-5



CiRA-j-1507-E: passage-5



CiRA-j-1507-F: passage-5



(All images were captured at 4x magnification)